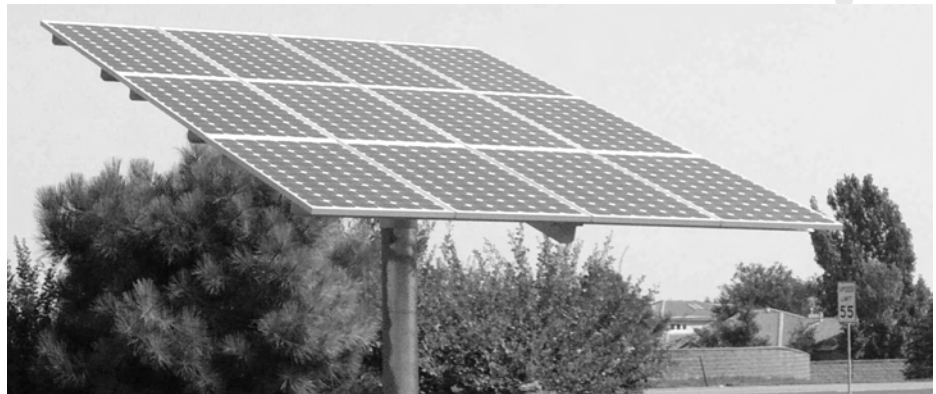


Power Lines



INSIDE ...

- * Scholarships Available
- * Wanted: Nominations Committee
- * PVREA Employee Wins at Fair
- * Remembering Leon Wick
- * PVREA Donates to Food Bank



Poudre Valley REA dedicated its 2.1-kW solar demonstration project September 27. Over a one-year period, the system has the potential of generating 3,024 kWh of electricity.

Solar Demonstration Project Shows Green Commitment

PVREA's board will investigate and test renewable technologies

BY BRAD GASKILL, GENERAL MANAGER

MAILING ADDRESS
P.O. Box 272550
Fort Collins, CO 80527-2550

STREET ADDRESS
7649 REA Parkway
Fort Collins, CO 80528

970-226-1234 Phone
800-432-1012 Toll free
970-226-2123 Fax

www.pvrea.com Web
pvrea@pvrea.com Email

NEXT BOARD MEETING

October 30



On Thursday, September 27, Poudre Valley Rural Electric Association held a dedication ceremony to launch its 2.1-kilowatt solar demonstration project at the association's headquarters in Windsor. Along with cooperative representatives from across the state, several local and state government officials and area dignitaries were on hand for the ribbon-cutting celebration.

The renewable energy project features 12 SolarWorld panels. Each panel has a maximum output capability of 175 watts. Together, the panels have the ability to produce a maximum of 2,100 watts of energy from the sun. Over a one-year period, the system has the potential of generating 3,024 kilowatt-hours of electricity.

To my knowledge, the solar demonstration project is the second for a Colorado rural electric cooperative and the first on the east side of the Rocky mountains. With this project, the PVREA



Brad Gaskill,
general manager

board has taken a proactive approach toward assisting members in learning more about renewable energy options. The goal is to use this solar system as an educational tool so co-op consumers can see firsthand how a solar system actually works. In addition to the panels, PVREA has installed sophisticated metering that will track the system's performance. An interactive computer kiosk monitoring the solar system's energy output on a real-time basis will be located in the lobby of the headquarters office. This will allow interested consumers to gather data on how much energy is being produced by the system. I encourage all members to stop by the office to view the system or to obtain further information about PVREA's renewable efforts.

I believe that in the past many of Colorado's rural electric cooperatives, including PVREA, have been unfairly labeled as being resistant or in opposition to renewable energy. Our mes- *[continued on page 6]*



Solar Demonstration

[continued from page 5]

sage hasn't been one of resistance or opposition, but simply one of education. It has been our goal to make sure our membership understands that generating electricity from renewable sources is more expensive than traditional hydropower and fossil fuel methods of generation. Our message has been one of being cost conscious in the interest of our membership. Using more expensive methods to generate our electricity is generally going to mean paying higher electric bills.

PVREA's solar demonstration project is the result of the board's sincere interest and commitment to investigate and test renewable energy technologies. The project will allow members to gain valuable knowledge and a better understanding of how the technology works and might be used in their personal application. Hopefully, it validates that PVREA is not anti-renewable and recognizes the co-op's efforts and willingness to explore, experiment with and promote renewable and other new technologies in the interest of the membership.

In a continued effort to promote and encourage the efficient and wise use of electric energy, PVREA will be kicking off a compact fluorescent lightbulb program in October. Under the energy conservation program, the association will make CFLs available to members at no cost or low cost. For details please contact the member and customer services department by calling 970-226-1234 or (toll free) 800-432-1012, or by email at pvrea@pvrea.com.

October is National Cooperative Month

Since National Cooperative Month is observed and celebrated in October, I thought it would be appropriate to briefly talk about the cooperative difference.

As a member of your rural electric cooperative, you benefit from local service, ownership and accountability. PVREA is owned by those who receive its service, which makes you, the member, an owner of PVREA. You elect a board of directors to represent you and your interests. Management is held accountable by the board

ATTENTION HIGH SCHOOL SENIORS OR UNDERGRADS

Poudre Valley REA Offers Nine Scholarships

Each year nine scholarships are available through Poudre Valley REA for high school seniors and college undergraduate students. Basin Electric and Tri-State Generation and Transmission each offer scholarships, in addition to the seven scholarships Poudre Valley REA has established.

Applicants must be dependents of parents (or consumers themselves) who currently receive electric service from Poudre Valley REA. If the PVREA consumer is a business, that business may appoint a candidate of its choice. Previous winners may reapply if they still qualify.

Applications are reviewed to make sure that 1) each is complete, 2) the

applicant is eligible, 3) the required documentation has been submitted and 4) the deadline has been met. If all the requirements are filled, the winners names will be drawn at random — one winner and one alternate for each scholarship.

Listed below are the scholarships available. By completing an application, students are applying for all scholarships. Scholarship information and applications are on PVREA's website at www.pvrea.com. Choose the **Scholarship, Etc.** tab on the home page.

All entries must be submitted by February 15, 2008. Applications with a postmark later than February 15 will not be accepted.

SCHOLARSHIPS

Scholarship	Number Available	Amount	Schools
Basin Electric Power Cooperative	1	\$1,000	Any U.S. college
Poudre Valley REA	6	\$1,000	Colorado State University, Front Range Community College, University of Northern Colorado, Aims Community College, University of Colorado
Tri-State G&T and Poudre Valley REA	2	\$500	Colorado State University, Front Range Community College, University of Northern Colorado, Aims Community College, University of Colorado

and the board in turn is accountable to you, the membership.

One of our prime missions is to provide reliable electric power at the lowest possible cost. During this time of increasing concern about the economy, especially rising energy prices, our job has become more difficult. However, we will continue to communicate the associa-

tion's issues and concerns to policy makers on all levels, whose actions affect PVREA members and the communities in which they work and live. Simply put, the cooperative difference results in an organization that is always looking out for its members' best interest.

I look forward to visiting with you again.

Wanted: PVREA Members for Nominations Committee

Each November, a Nominations Committee meets to nominate candidates for director positions on the Poudre Valley Electric Association Board of Directors. Each director needs to find one member who is willing to serve. This committee is made up of PVREA members who are willing to spend a little time helping PVREA find eligible board candidates. The meeting is held at Poudre Valley REA's headquarters near Windsor November 16 and lasts approximately two hours. Members are reimbursed for attending and for mileage to and from the meeting.

Nominations committee members are given all the information they need to help them find board candidates. For example, they will be able to tell prospective candidates what positions are up for election, how much time is involved in board business and what makes a qualified candidate.

On the day of the Nominations Committee meeting, committee members bring a name for one (or all) of the open positions. The process is fairly simple at the meeting, because each candidate nominated will have already been contacted by a committee member and will have agreed to run.

At the 2008 annual meeting, the following four board positions will be open:

District 1, Position B, At Large (the candidate must have a meter[s] in PVREA's territory in Larimer, Weld or Boulder Counties).

District 2, Position C, Boulder County (the candidate must have a meter[s]

in PVREA's territory in Boulder County).

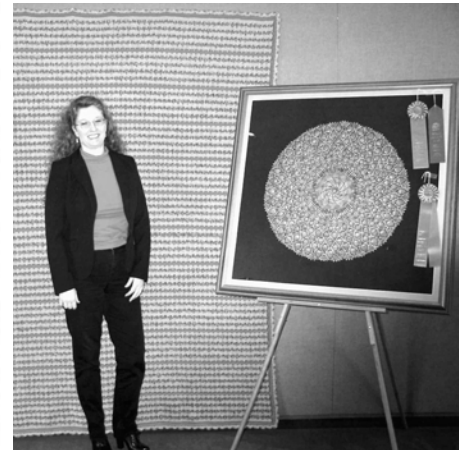
District 3, Position F, Weld County (the candidate must have a meter[s] in PVREA's territory in Weld).

District 4, Position H, Larimer County (the candidate must have a meter[s] in PVREA's territory in Larimer County).

Members who are interested in serving should contact one of the directors listed below:

- Dean Anderson, Berthoud
970-532-2579
- Keith Croonquist, Loveland
970-667-8658
- Georglyn Diehl, Ault
970-834-2987
- Ed Hansen, Livermore
970-493-8042
- Gail Spencer Hole, Fort Collins
970-226-3465
- Ric Johnson, Loveland
970-690-7978
- Robert Lock, Longmont
303-443-7682
- Thaine Michie, LaPorte
970-498-8349
- Jim Park, Kersey
970-352-2125
- Jack Schneider, Eaton
970-686-5235
- Ron Sutherland, Boulder
303-443-7526

More details on the Nominations Committee are available in the bylaws of the association, a copy of which may be obtained at PVREA's office.



Lisa Flye shows her ribbons for her hand-crocheted bedspread and her fiber art.

PVREA Employee Wins at Fair

Lisa Flye, an employee at Poudre Valley REA, won four ribbons at the Weld County Fair, which was held in July. Lisa won the 1st place ribbon in the bedspread class with a beautifully hand-crocheted bedspread. Lisa also went on to win a first place ribbon in the doily over 10 inches class. She also won a ribbon as the adult champion in fiber arts, and a ribbon as overall grand champion in fiber art.

The turquoise bedspread with pink trim that she crocheted took her approximately 80 hours, and her doily took her over 200 hours to complete. It takes a person who pays attention to detail to do this type of work, and as anyone can see Lisa was dedicated to making both these beautiful works of art. She was definitely up to the task. Poudre Valley REA is proud of Lisa.



**Daylight-saving time ends at
2 a.m. Sunday, November 4.
Don't forget to set your
clocks back one hour.**

ARE YOU A WINNER?

If you see your account name in the Poudre Valley insert, you have until the last day of the month that the magazine is dated to claim your reward by calling PVREA at 970-226-1234. More than ever, it pays to keep informed about your electric utility.

Remembering Retired GM Leon Lewis Wick

Poudre Valley REA retired General Manager Leon Lewis Wick passed away August 22, 2007, in Cheyenne, Wyoming, at the Veterans Medical Center. Leon was the manager of Poudre Valley Rural Electric from 1969 to 1983, a charter member of Foothills Rotary Club and a member of Faith United Church of Christ in Windsor.

Leon was born February 14, 1918, in Rose Hill, Kansas, to Fannie and Leon W. Wick. Leon grew up in Wichita, Kansas, and graduated from Wichita East High School in 1936. He worked as a desk clerk at the Commodore Hotel until enlisting in the U.S. Marine Corps in 1939. After being stationed in San Diego, California, Leon was shipped to Midway Island. He was on Midway during the Japanese attack on Pearl Harbor and during the Battle of Midway. After attending the

Pacific Fleet Radar School in Hawaii, Leon was sent to Russell Island in the Solomon Islands and helped set up a radar-guided anti-aircraft crew. While on special assignment to Bougainville in November of 1943, he was seriously wounded. He had a long recovery at Mare Island Naval Hospital in California and worked at the University of California Radiation Laboratory on a top-secret project.

After discharge from the Marines as a master technical sergeant, he attended Kansas State University in Manhattan, Kansas. While at college he met his wife of 61 years, Donna Jean Robison. They were married September 16, 1945, and their daughter, Linda, was born in 1948. Leon graduated in 1948 with a degree in electrical engineering.

After graduation, Leon worked as an



Leon Wick, who served as Poudre Valley's general manager from 1969 until his retirement in 1983, died August 22, 2007.

electrical engineer for the Rural Electrification Administration in Washington, D.C., and then as a field engineer in Hastings, Nebraska, where their son, Robin, was born in 1950. In 1951 the family moved to WaKeeney, Kansas, where Leon spent many years as the general manager of Western Cooperative Electric and then became the first manager of Sunflower Generation and Transmission while still managing Western. He had many friends, family and co-workers from his days in Kansas.

Leon moved on to become the general manager of Poudre Valley REA in Fort Collins in 1969 and made many friends over the years. Leon enjoyed traveling and camping with RVs for many years, lots of times with family or friends. He enjoyed hunting, fishing and playing bridge. After retiring in 1983, Leon and Donna spent winters in Tucson, Arizona.

The employees who were at PVREA when he was general manager all agree that Leon was a great boss to work for and that he was fair with everyone and in everything he did. Leon fondly remembered by the association.

"I believe that imagination is stronger than knowledge,

That myth is more potent than history,
That dreams are more powerful than facts,
That hope always triumphs over experience,
That laughter is the only cure for grief,
And I believe that love is stronger than death."

ROBERT L. FULGHUM

PVREA HELPS COMMUNITY BY DONATING TO FOOD BANK

Heather Buoniconti, development director at the Food Bank of Larimer County, a United Way Agency, stopped by to receive a donation from the Poudre Valley REA employees canned food drive.

Poudre Valley REA employees donated over 500 pounds of food, two \$25 Safeway gift certificates and \$86 in cash. Heather mentioned to the employees that the Food Bank of Larimer County dispensed over 5 million pounds of food in 2006. Through the Kids Cafe, children ages 3 to 18 receive free meals after school and during the summer months at feeding sites throughout key locations in Larimer County. The Kids Cafe and Food Bank of Larimer County also prepared and served 37,877 meals at the Boys and Girls Clubs and local community centers. The food bank is an important source of food for more than 8,000 low-income Larimer County residents. Nearly one-half of the recipients are children and senior citizens.

Keeley Aggers and Julie Phillips from United Way of Larimer County also made a presentation on the importance of donating to United Way. Keeley noted that "no gift is too small, and a donation of just \$1 will provide food for four meals."

Food, money and volunteers are always needed. For more information please contact your local food bank and ask how you can help or contact United Way at www.uwaylc.org. (Win* Michelle Petago)

Together we can make a difference.



Left to right: Julie Phillips, Keeley Aggers and Sue Knapp stand next to a portion of the food PVREA donated to the food bank.